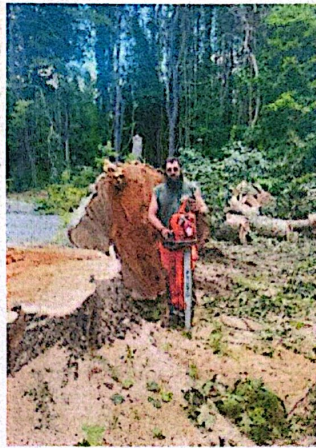


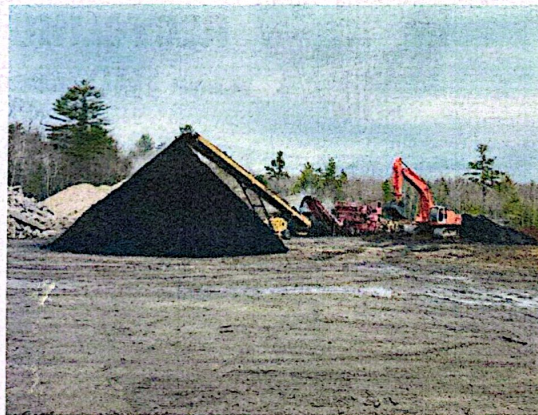
M&L Aggregate Pricing Per Yard		
In order to qualify for contractor pricing, you must be engaged in a commercial enterprise pertaining to the sale and/or installation of landscape material.		
Item Description	Contractor	Retail
<b>Stone</b>		
3/4" Crushed Stone	\$45.00	\$47.00
1 1/2" Crushed Stone	\$43.00	\$45.00
3/8" Crushed Stone	\$48.00	\$53.00
3/4" Round Stone	\$60.00	\$65.00
1 1/2" Round Stone	\$60.00	\$65.00
Rip Rap	\$60.00	\$65.00
<b>Gravel</b>		
3/4" Crushed Gravel - Brown	\$35.00	\$40.00
3/4" Gravel - Gray	\$40.00	\$45.00
Stone Dust	\$30.00	\$35.00
2" Crushed Gravel	\$34.00	\$36.00
3" Crushed Gravel	\$28.00	\$30.00
<b>Loam/Sand/Fill</b>		
Screened Loam	\$28.00	\$30.00
Screened Super Loam	\$35.00	\$37.00
Screened Compost	\$44.00	\$46.00
Bank Run Sand	\$20.00	\$22.00
Screened Sand	\$22.00	\$24.00
General Fill	\$15.00	\$17.00
Sand/Salt Mix	\$75.00	\$85.00
<b>Mulch</b>		
Double Shot Black	\$33.00	\$38.00
Triple Shot Black (Finer)	\$38.00	\$43.00
Dark Brown	\$33.00	\$38.00
Mocha	\$33.00	\$38.00
Natural Undyed	\$33.00	\$38.00
Erosion Mulch	\$10.00	\$15.00
Wood Chips	\$10.00	\$15.00

Prices are subject to change with or without notice due to cost increases.

**Tree Removal Services!**



**Our Own Mulch!**



Disposal Rates	Per Yard
Stumps	\$9.00
Brush mixed with dirt/Roots	\$9.00
Clean Brush, Limbs, Logs etc	\$7.00
Leaves, Grass, Garden Debris or Other Compostables	\$6.00
Clean Concrete Products (No Debris or Rebar mixed in)	\$25.00
If contains Rebar	\$35.00
Clean fill, Rocks, Soils etc (Must be free of invasive species. No bamboo, bittersweet etc,)	\$3.00
<b>When Available:</b>	
<u>Millings</u>	
Contractor	\$30
Residential	\$35
<u>Mosaic Mulch</u>	
Contractor	\$20
Residential	\$25
<b>Any Aggregate Material by the 5 gallon bucket</b>	<b>\$7.50 + tax</b>